



# **Radiology Techniques**

## **Department**

### **The Radiological Anatomy**

#### **Lecture 2**

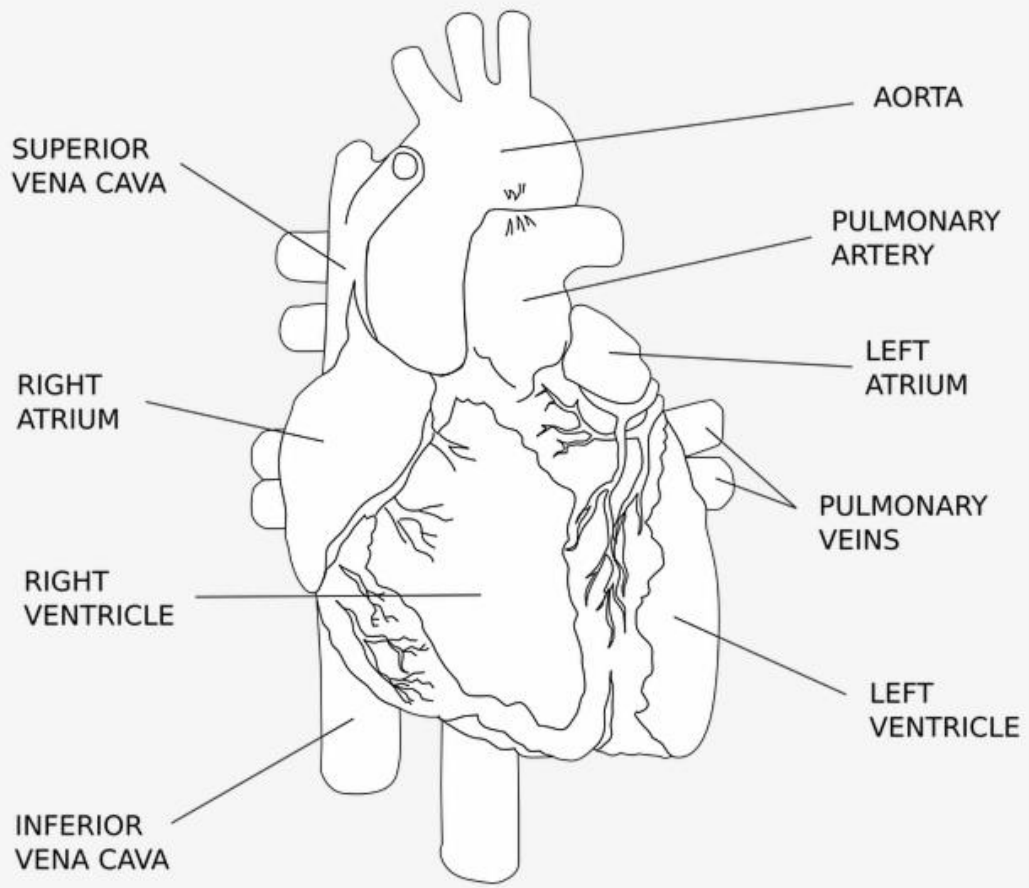
#### ***HEART AND CORONARY ARTERIES RADIOLOGICAL ANATOMY***

**By**

**M.Sc. Zeyad Tareq & M.Sc. Salman Mohammed**

**3rd Stage**

# THE HUMAN HEART



NOT NECESSARILY ACCURATE. ARTIST'S REPRESENTATION ONLY.

# The Heart

## Gross anatomy and orientation

The heart is pyramidal in shape and lies obliquely in the chest. Its square-shaped base points posteriorly and the elongated apex to the left and inferiorly.

The left atrium forms the base or posterior part, with the superior and inferior pulmonary veins draining into its four corners.

The right atrium forms the right border, with superior and inferior venae cavae draining into its upper and lower parts.

The apex and left border are formed by the left ventricle.

The right ventricle forms the anterior part.

The inferior (diaphragmatic) part of the heart is formed by both ventricles anteriorly and a small part of right atrium posteriorly where the IVC enters this chamber.

The interatrial and interventricular septa are said to lie in the left anterior oblique plane

The plane of the valves is also inclined inferiorly and to the left.

## **Pericardium**

This is a closed sac consisting of parietal and visceral layers that enclose a potential space which contains 20-25 mL of serous fluid. It is draped over the heart and great vessels.

The visceral layer adheres to the myocardium and is also known as the epicardium.

The parietal layer is free, except inferiorly, where it is bound to the central tendon

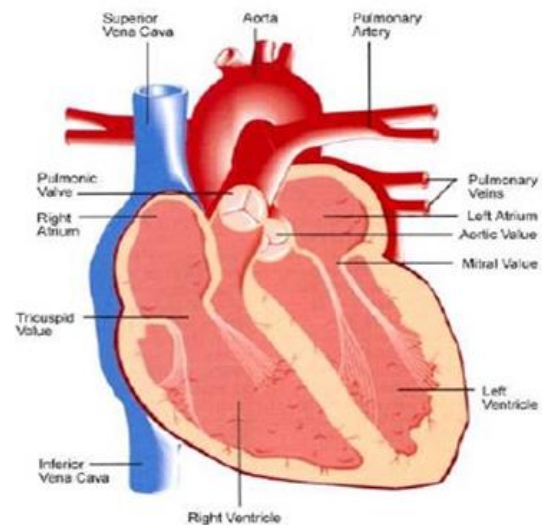
of the diaphragm, and superiorly where it fuses with the covering of the great vessels.

Some fat is present between the epicardium and myocardium. This increases with age. Fat is also present between the pericardium and mediastinal pleura, and it may be extensive in the anterior and lateral cardiophrenic angles, where it is known as the pericardial fat pad.

## Cardiac chambers and valves

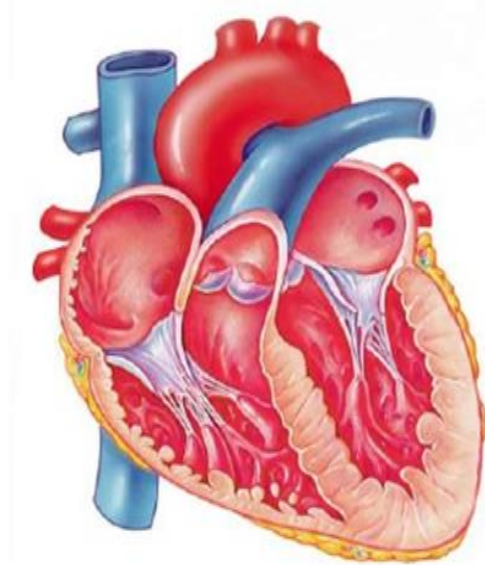
# The Heart Chambers

- **Four chambers**
  - Two atria (Right and Left)
  - Two ventricles (Right and Left)



# The Heart Chambers

- Atria
  - *Features*
    - small, thin-walled chambers
  - *Functions*
    - receiving chambers for blood returning to the heart from the circulation
    - push the blood into the adjacent ventricles.

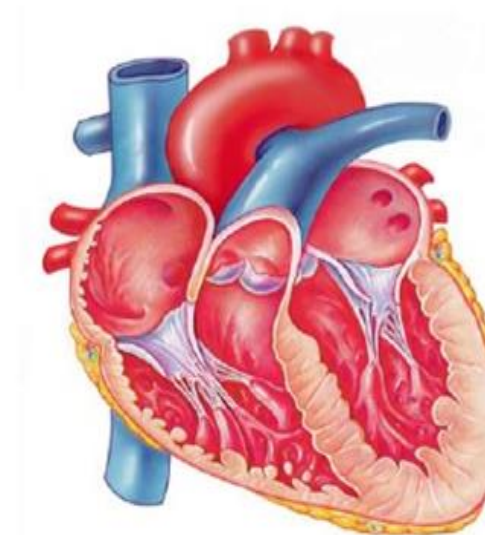


Jesús A. Custodio Marroquín

10

# The Heart Chambers

- Atria
  - Receive blood from
    - *Right side*
      - ❖ Superior and Inferior Vena Cava
    - *Left side*
      - ❖ Pulmonary Veins



Jesús A. Custodio Marroquín

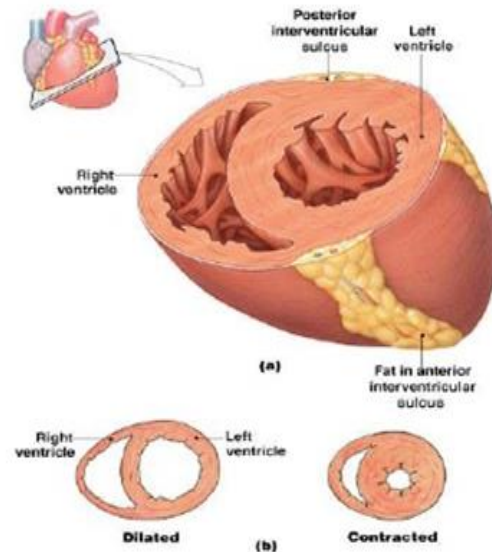
11

# The Heart Chambers

- Ventricles

- Features

- make up most of the mass of the heart
    - the walls of the left ventricle are 3X thicker than those of the right

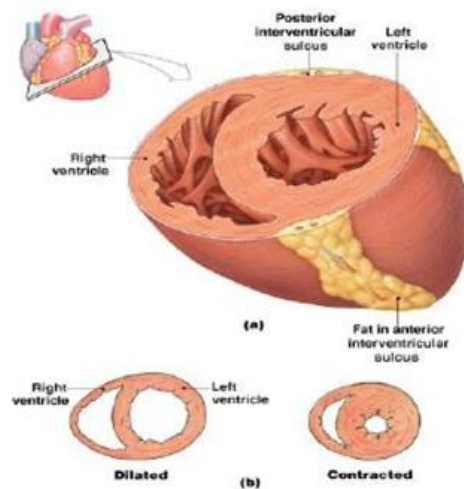


# The Heart Chambers

- Ventricles

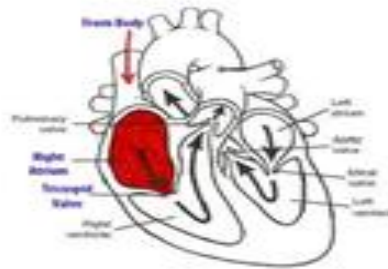
- Functions

- discharging chambers of the heart
    - propel blood to Pulmonary Trunk (right ventricle), Aorta (left ventricle)



## The Right Atrium

- Receives deoxygenated blood from the inferior vena cava below and from the superior vena cava above.

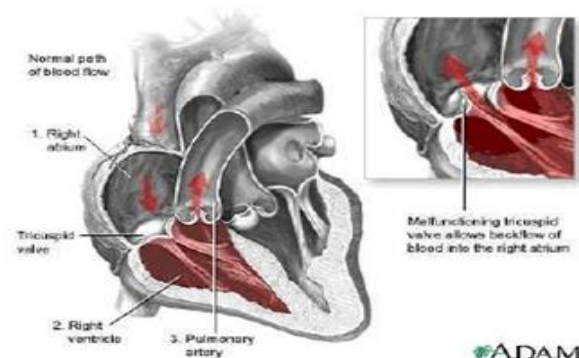


Jesús A. Custodio Marroquín

14

## The Right Ventricle

- Receives blood from the right atrium through the **tricuspid valve** .

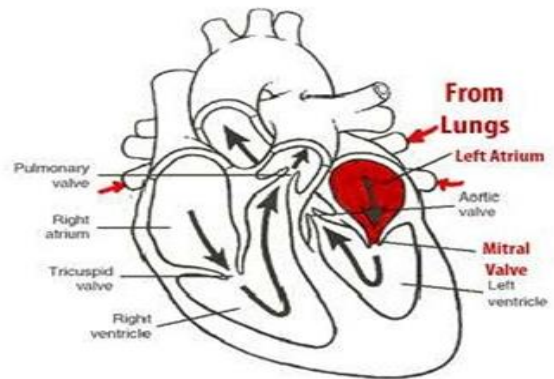


Jesús A. Custodio Marroquín

15

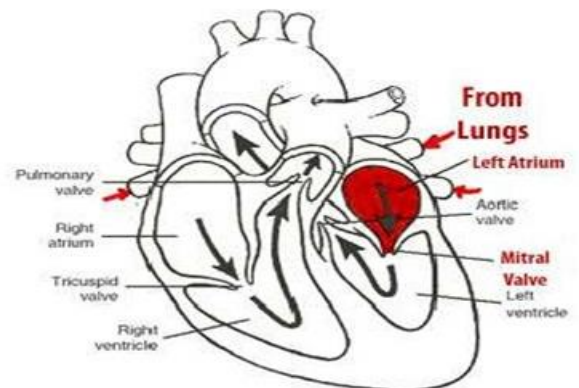
# The Left Atrium

- Receives oxygenated blood from four pulmonary veins which drain posteriorly.



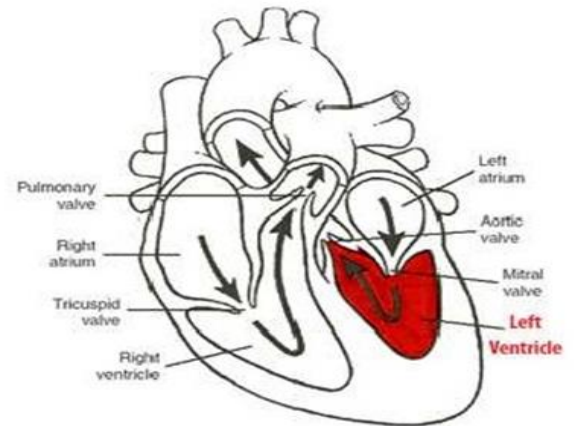
# The Left Atrium

- The ***mitral (bicuspid)*** valve guards the passage of blood from the left atrium to the left ventricle.



# The Left Ventricle

- The wall of the left ventricle is thicker than the right ventricle but the structure is similar.
- The thick wall is necessary to pump oxygenated blood at high pressure through the systemic circulation.

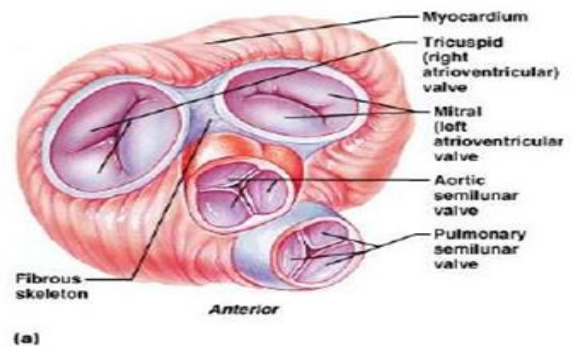
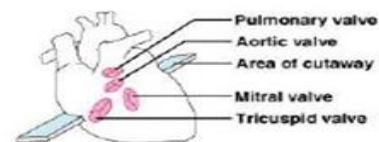


Jesús A. Custodio Marroquín

18

# Atrioventricular (AV) Valves

- Atrioventricular (AV) valves lie between the atria and the ventricles
  - R-AV valve = tricuspid valve
  - L-AV valve = bicuspid or mitral valve
- AV valves prevent backflow of blood into the atria when ventricles contract

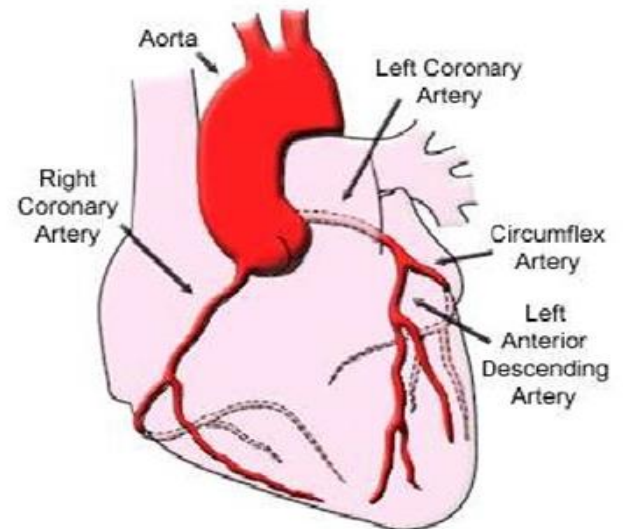


Jesús A. Custodio Marroquín

21

# Arterial Supply of the Heart

- The arterial supply of the heart is provided by the **right** and **left** coronary arteries, which arise from the **ascending aorta** immediately above the aortic valve.



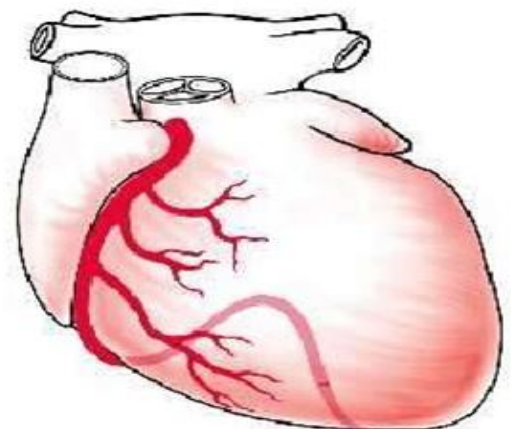
Jesús A. Custodio Marroquín

26

## Right coronary artery

### Branches

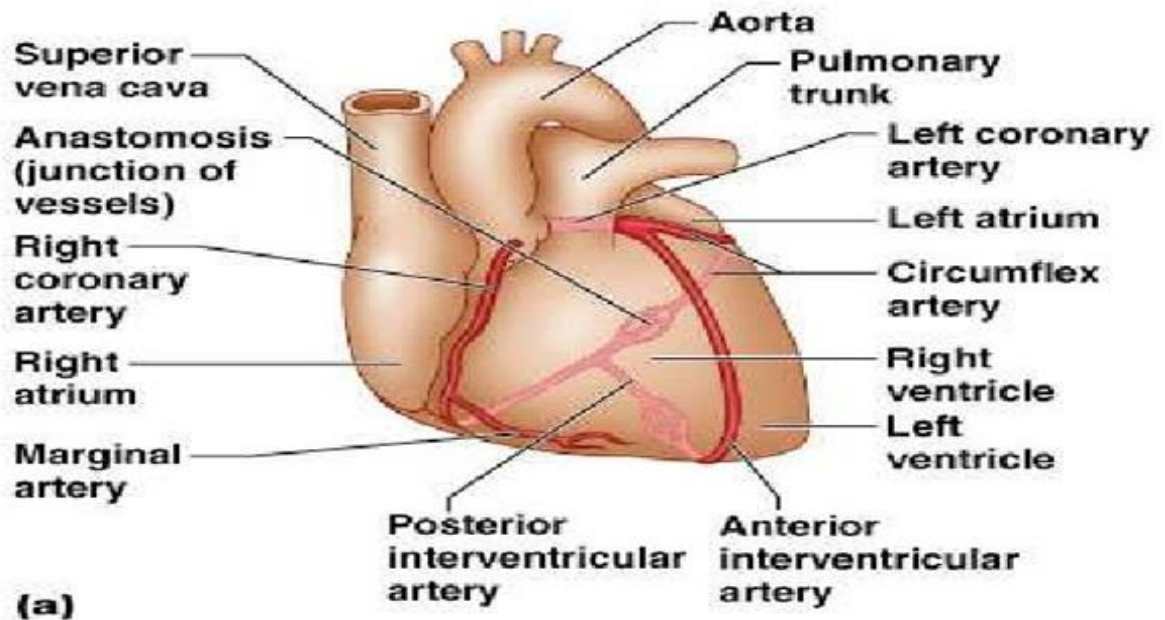
- Right marginal arteries (acute marginal artery)
- Posterior interventricular artery. (in post. IV sulcus)
- Sinoatrial nodal artery.
- Atrioventricular nodal artery.



Jesús A. Custodio Marroquín

27

## Coronary Arteries

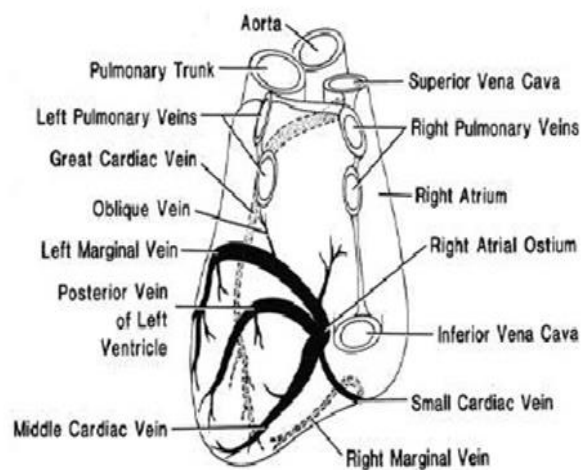


Jesús A. Custodio Marroquín

29

## Venous Drainage of the Heart

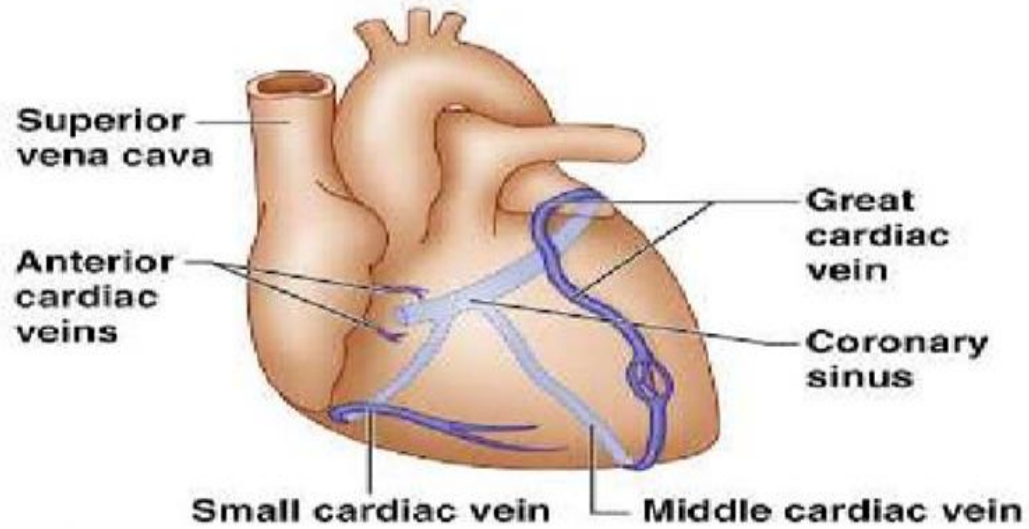
- Most blood from the heart wall drains into the right atrium through the **coronary sinus**, which lies in the posterior part of the atrioventricular groove .
- It is a continuation of the **great cardiac vein**.
- It opens into the right atrium to the left of the inferior vena cava



Jesús A. Custodio Marroquín

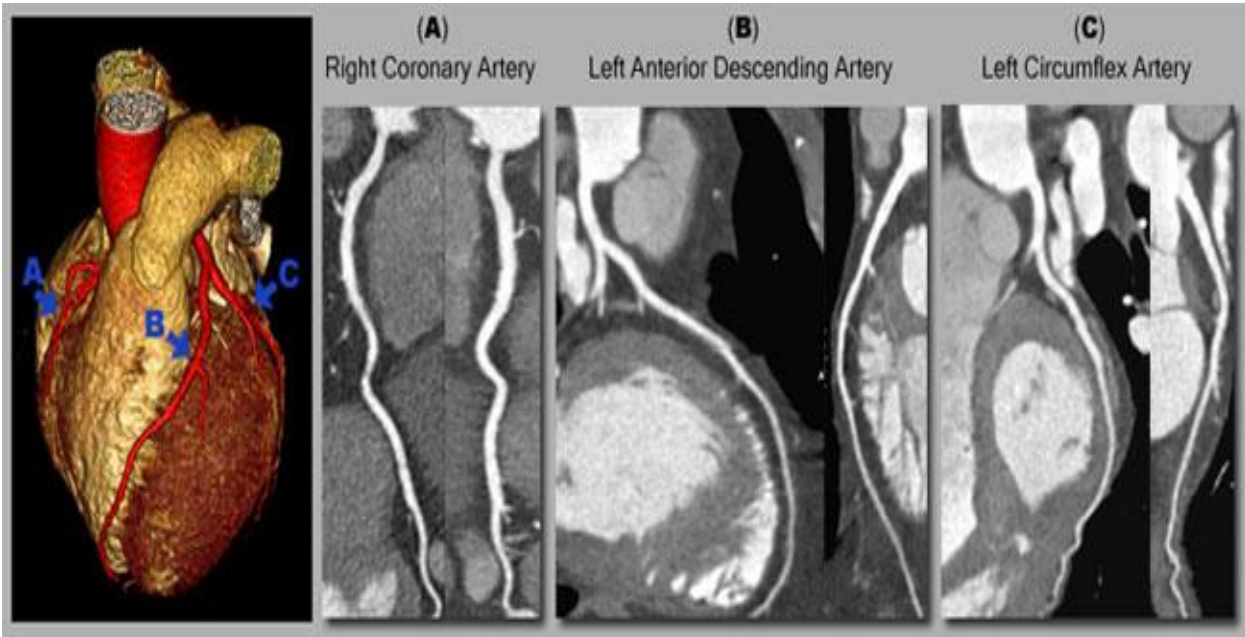
30

# Venous Drainage of the Heart



Jesús A. Custodio Marroquín

31

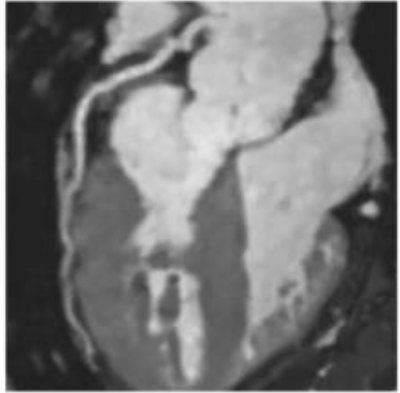
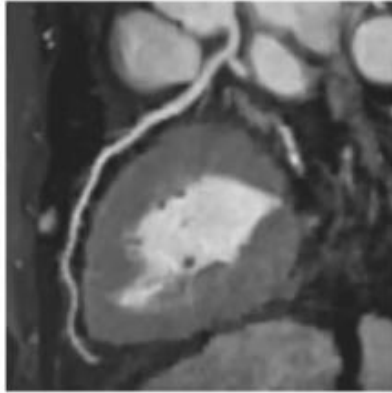
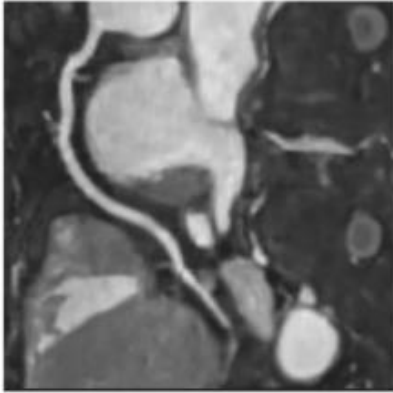


RCA

LAD

LCX

A



B

